



Castle House, 7 The Parade, Castletown, Isle Of Man, IM9 1LG  
Asking Price £730,000



- **Stunning 3000 Square Foot Townhouse In Historic Castletown**
- **Off Street Parking For Up To Five Vehicles**
- **Four Floors Offering Flexible And Spacious Accommodation**
- **Sea Views Towards Scarlett And Historic Views Of Castle Rushen**
- **Large Walled Rear Garden With Outbuildings And Potential Extension**
- **Oil Fired Central Heating And Sliding Sash Windows**





## Castle House, 7 The Parade, Castletown, Isle Of Man, IM9 1LG

A truly stunning 3,000 sq ft townhouse, superbly positioned in the ancient capital of Mann, Castletown. Arranged over four spacious floors and offering an exceptional blend of character, scale and versatility, this is a rare opportunity to acquire a substantial home in one of the Island's most historic settings.

The property welcomes you with a grand entrance hall featuring hardwood flooring and impressive ceiling heights, immediately setting the tone for the accommodation beyond. A magnificent dining room provides an elegant space for entertaining, while the separate fully fitted kitchen is well-appointed and practical, complemented by a utility room and ground floor WC.

On the lower ground floor, a cosy snug offers the perfect retreat, alongside a dedicated home gym and generous built-in storage cupboards, creating flexible space to suit modern living.

The first floor hosts two large double bedrooms. The primary bedroom enjoys sea views towards Scarlett, while the second bedroom benefits from picturesque views over the iconic Castle Rushen. This floor also includes bedroom five – ideal as a single bedroom, nursery or home office – together with a well-proportioned family bathroom.

The top floor provides two further generous double bedrooms and an updated family bathroom, making the layout perfectly suited to growing families or those seeking adaptable accommodation.

Externally, the property continues to impress. A large, walled rear garden offers privacy and space, complemented by substantial outbuildings with potential (subject to planning) for conversion to an annexe. There is access to a rear car park providing off-street parking for up to five vehicles.

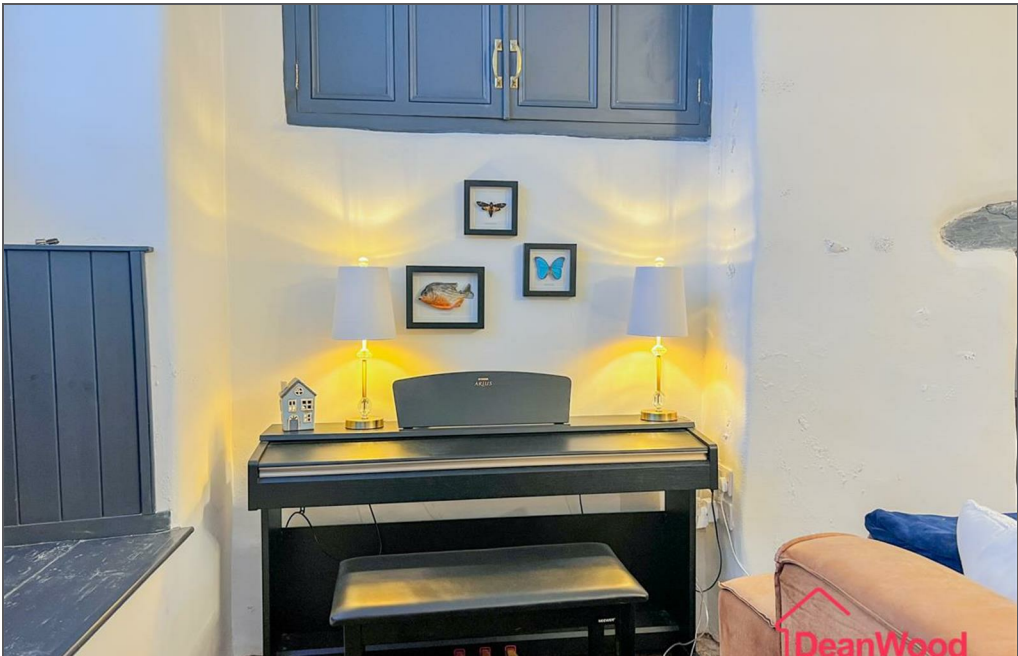
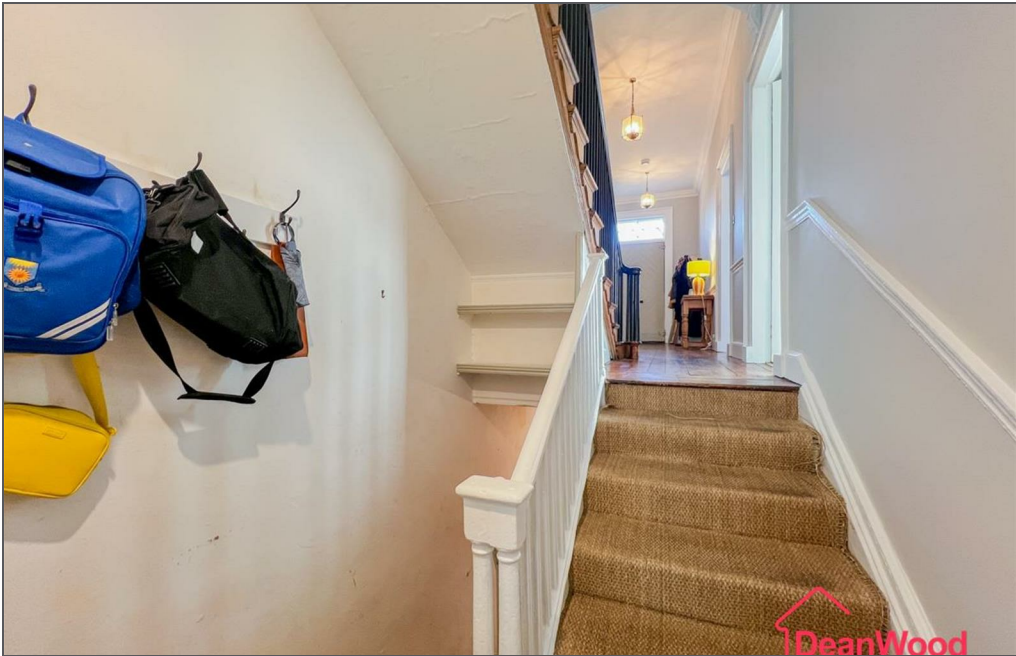
Additional features include oil-fired central heating and traditional sliding sash windows, enhancing the home's period charm while ensuring modern comfort.

















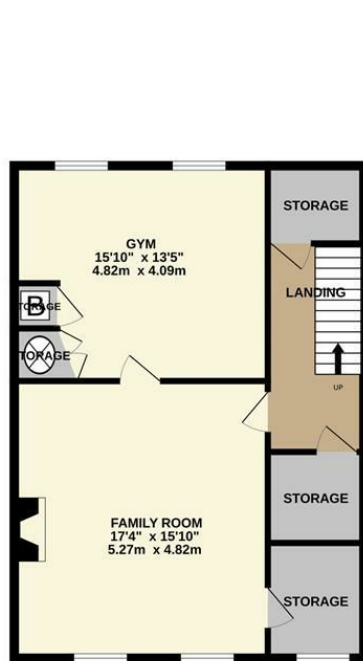




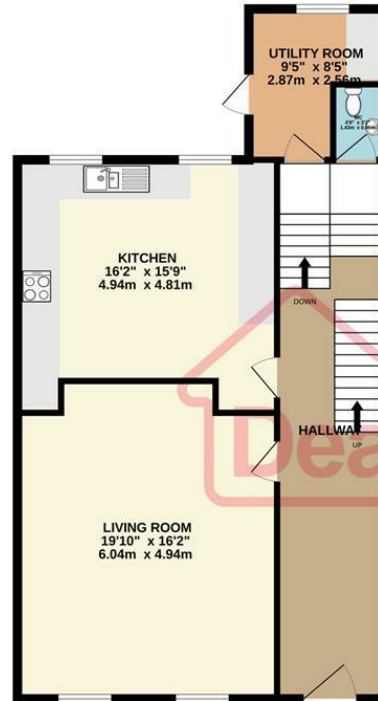


## Castle House, 7 The Parade, Castletown, Isle Of Man, IM9 1LG

LOWER GROUND FLOOR  
664 sq.ft. (61.7 sq.m.) approx.



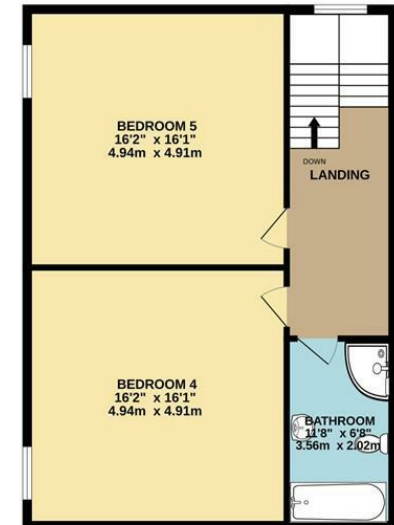
GROUND FLOOR  
847 sq.ft. (78.7 sq.m.) approx.



1ST FLOOR  
847 sq.ft. (78.7 sq.m.) approx.



2ND FLOOR  
735 sq.ft. (68.3 sq.m.) approx.



TOTAL FLOOR AREA : 3093 sq.ft. (287.4 sq.m.) approx.

Not to scale-for identification purposes only  
Made with Metropix ©2026



### DOUGLAS

37 VICTORIA STREET  
DOUGLAS  
ISLE OF MAN IM1 2LF

T 01624 620606

F 01624 677363

E info@deanwood.co.im

### CASTLETOWN

COMPTON HOUSE  
9 CASTLE STREET CASTLETOWN  
ISLE OF MAN IM9 1LF

T 01624 825995

F 01624 825996

E castletown@deanwood.co.im

### RAMSEY

LEZAYRE HOUSE  
87 PARLIAMENT STREET  
RAMSEY ISLE OF MAN IM8 1AQ

T 01624 816111

F 01624 816588

E ramsey@deanwood.co.im

These particulars are for information purposes only. They do not constitute or form any contract nor should any statement contained herein be relied upon as a representation of fact. Neither the vendor nor DeanWood Agencies Limited ('the firm'), nor any officer or employee of the firm accept liability or responsibility for any statement contained herein. The vendor does not by these particulars, nor does the firm, nor does any officer or any employee of the firm have any authority to make or give any representation or warranty whatsoever as regards the property or otherwise. It is the sole responsibility of any person interested in the property described in these particulars to make all proper enquiries and searches to verify the description of the property and all other particulars herein.

FOR MORE PROPERTIES VISIT OUR WEBSITE @ [deanwood.im](https://deanwood.im)